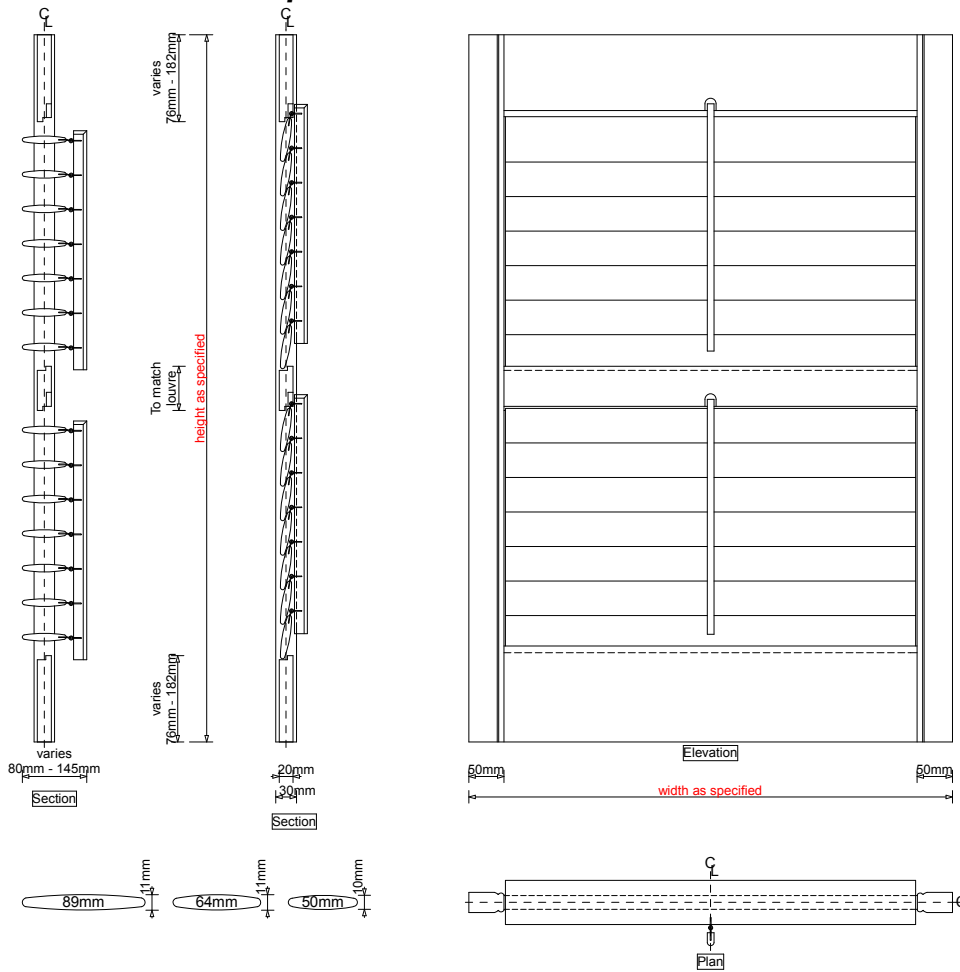


# Shutters - Basswood Plantation Specifications



## Basswood Plantation Specifications

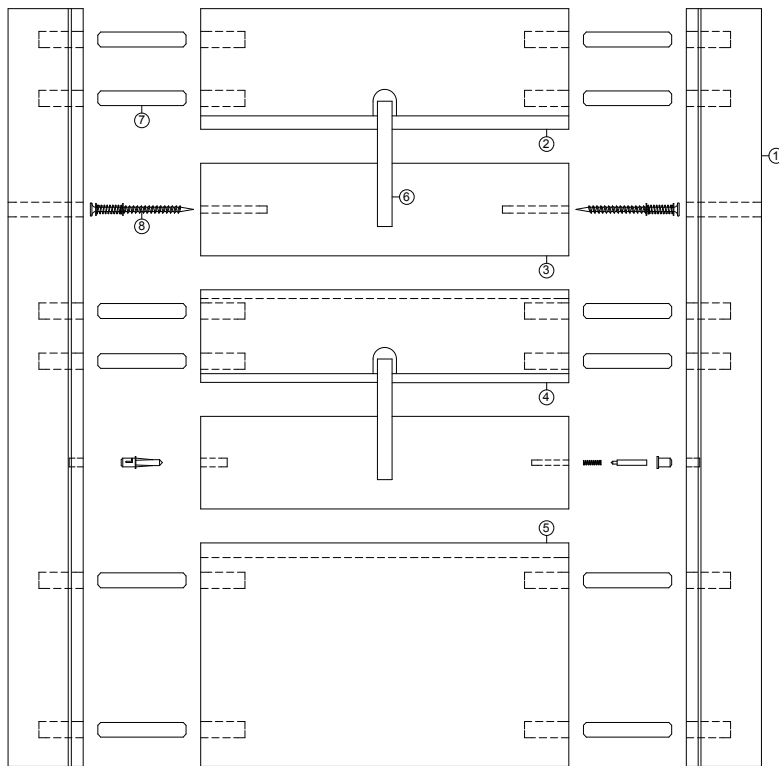


Louvre Size			
<b>Type</b>	<b>Size</b>	<b>Options</b>	<b>Ref to Section</b>
Louvre - Aerofoil	50mm x 10mm	Half Open, Fixed, Ventilated, Fixed Non-Ventilated	Louvre Size, Louvre Style, Fixed Shutters
Louvre - Aerofoil	64mm x 11mm	" " " " " " " " " " " "	" " " " " " " " " "
Louvre - Aerofoil	89mm x 11mm	" " " " " " " " " " " "	" " " " " " " " " "
Width & Height Hinged		Construction	
<b>Type</b>	<b>Size</b>	<b>Type</b>	<b>Size</b>
Maximum Width	950mm (Single Panel)	Joists	Ø10 Dowels (Top, Middle, Bottom Rail)
Maximum Height	500mm (Bi-fold Panel)	Tension Screw & Spring for Louvre	8g x 70mm Wood Screw Stainless Steel
Minimum Width	250mm (Single Panel)	Louvre Dowels & Spring	Ø4 & Ø 6, 2 Plastic Dowels, Carbon Steel Spring
Minimum Height	260mm	Eye Screw	Stainless Steel
Maximum Height	3.0m	Pin for Metal Tilt Rod	2g x 20mm, Brass
		Clear View Tilt Rod	3mm x 14mm, Metal
Finish		Stile & Rails	
<b>Type</b>	<b>Ref to Section</b>	<b>Type</b>	<b>Size</b>
Stain	Finishes	Stile	50mm x 30mm Colonial
Painted	" "	Top Rail	76mm - 182mm x 24mm
			(varies, depends on height of panel)
		Mid Rail	50, 64, 90mm x 24mm
			(varies, depends on Louvre size)
			Shutters over 1.500m 1 mid-rail
			Shutters over 2.950m 2 mid-rails
		Bottom Rail	76mm - 182mm x 24mm
			(varies, depends on height of panel)
		Tilt Bar	19mm x 12mm centred
			Left
			Right
			Clear View
			Tilt Rod, Construction
			" " " " " "
			" " " " " "
			" " " " " "
Track Systems			
<b>Type</b>	<b>Multi-fold 25</b>	<b>Single Run 60</b>	
Maximum Width	620mm per Panel (maximum 8 x Panels on each side)	950mm per Panel (maximum 6 x Panels on each track)	
Maximum Height	3000mm	3000mm	
Maximum Weight	25kg per Panel	60kg per Panel	

SPECIFICATIONS

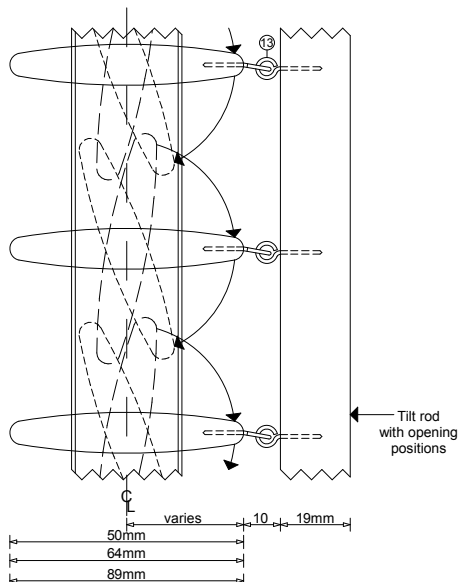
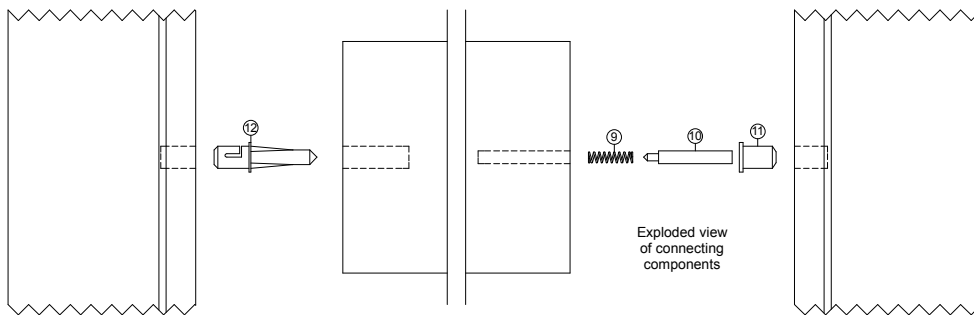
Sec. : Shutters  
Date : Jan 2013  
Page : 17

## Basswood Plantation Construction



### Component List

1. Stile
2. Top Rail
3. Louvre
4. Mid Rail
5. Bottom Rail
6. Tilt Bar
7. Dowel Joint
8. Tension Screw with spring
9. Louvre Spring
10. Louvre Dowel
11. Louvre Dowel Cap
12. Whole Dowel
13. Eye Screw



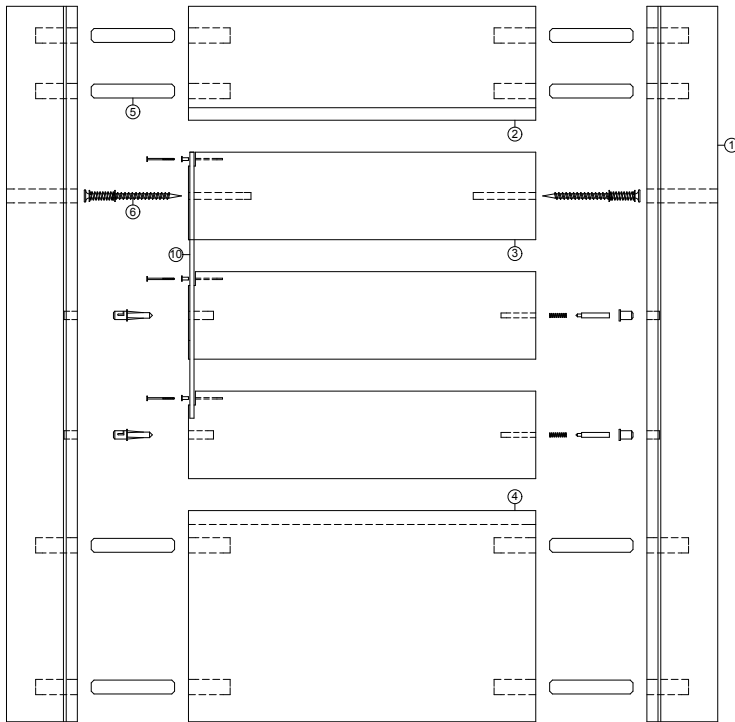
### Construction

The Basswood shutter is constructed using hardwood dowelled joints and water based glue that are glued in place to join the stiles, middle rail and bottom rail together as one frame. The dowel size is Ø10mm. All mid rails have 2 dowels. For top and bottom rails, 3 dowels are used for (120mm to 150mm) and 4 dowels are used for above (150mm) which strengthens, braces and prevents the frame from twisting, bowing or sagging. The louvres are mounted to the stile using the louvre dowel components, the tilt bar is then mounted to the louvres with the eye screws. The tension screw with spring is then mounted through the stile into the louvre and tensioned. The mid rail must be used when the shutter is over 1500mm in height. This is designed to give greater strength to the shutter frame. The benefit of the mid rail option is that it allows the shutter louvres to have two sections at different angles for privacy, light and airflow. If the shutter is over 2950mm in height, two mid rails will be necessary.

# Shutters - Basswood Clear View Construction

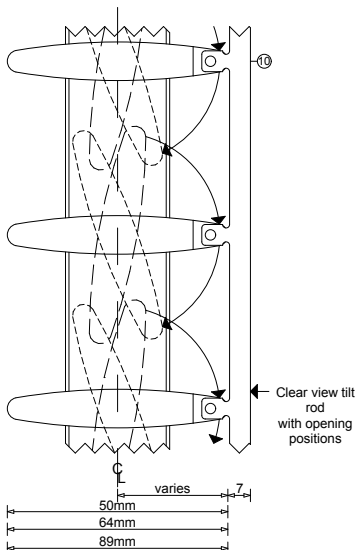
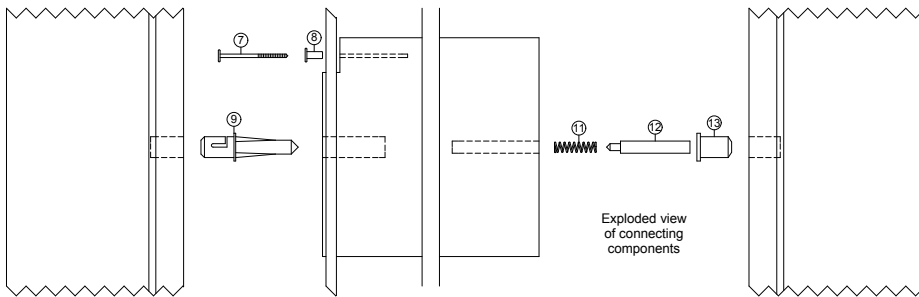


## Basswood Clear View Construction



### Component List

1. Stile
2. Top Rail
3. Louvre
4. Bottom Rail
5. Dowel Joint
6. Tension Screw with spring
7. Brass Nail
8. Brass Nut
9. Whole Dowel
10. Clear View Metal
11. Louvre Spring
12. Louvre Dowel
13. Louvre Dowel Cap

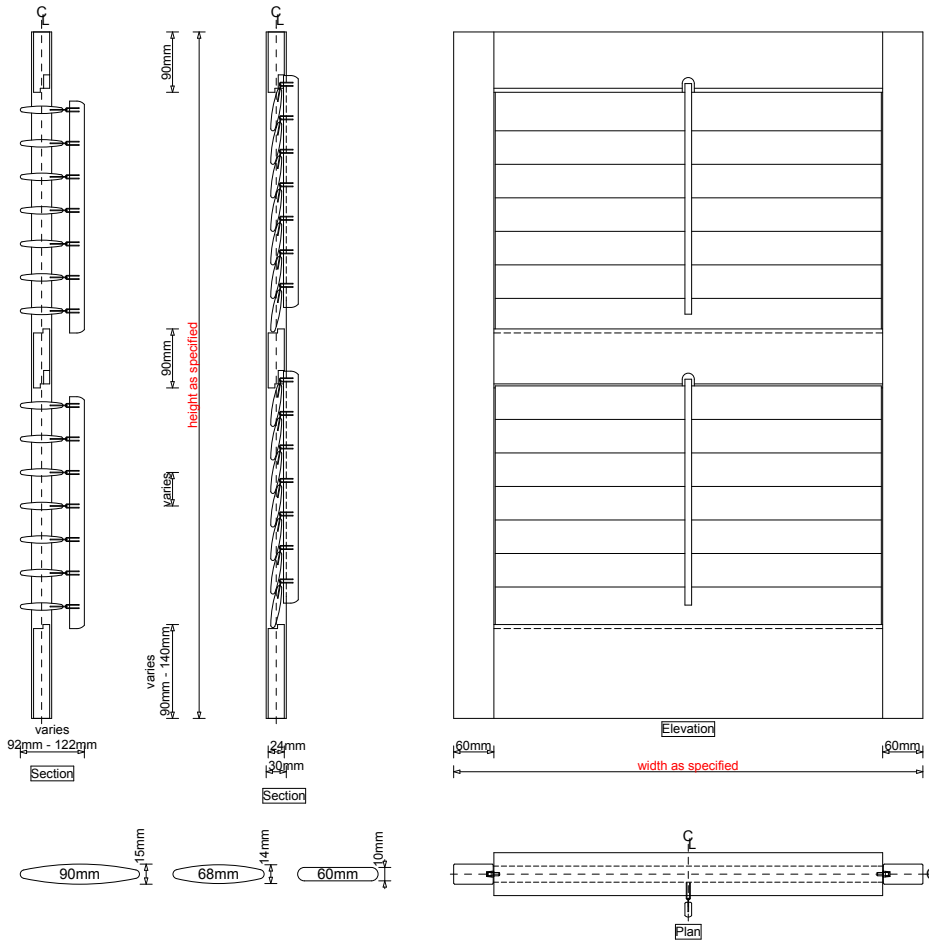


### Construction

The Clear View shutter is constructed the same way as the standard Plantation shutter with the exception of the tilt bar which is replaced with the Clear View metal tilt rod option. This tilt bar is rebated into the side of the louvre blade (on the reverse side of the panel) allowing for cleaner lines with unobtrusive view through the shutter when the louvres are open or closed. This option is ideal for sliding shutter applications as this decreases light gap measurements and allows each shutter panel to sit closer to one another.

SPECIFICATIONS

## Cedar Plantation Specifications

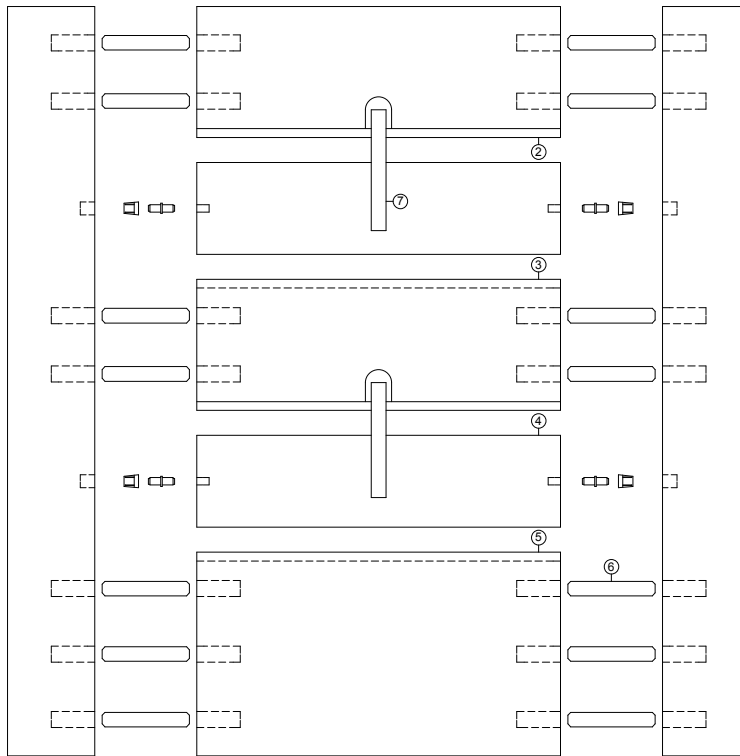


<b>Louvre Size</b>			
<b>Type</b>	<b>Size</b>	<b>Options</b>	<b>Ref to Section</b>
Louvre - Standard	60mm x 10mm	Half Open, Fixed, Ventilated, Fixed Non-Ventilated	Louvre Size, Louvre Style, Fixed Shutters
Louvre - Aerofoil	68mm x 14mm	" " " " " " " " " "	" " " " " " " " " "
Louvre - Aerofoil	90mm x 15mm	" " " " " " " " " "	" " " " " " " " " "
<b>Width &amp; Height Hinged</b>		<b>Construction</b>	
<b>Type</b>	<b>Size</b>	<b>Type</b>	<b>Size</b>
Maximum Width	950mm (Single Panel)	Ø10 Dowels (Top, Middle, Bottom Rail)	Ø10 x 18mm Pin (Nylon T66)
Maximum Width	500mm (Bi-fold Panel)	Pivot Pin for Stile/Louvre	Ø8 x 10mm Bush (Nylon T66)
Minimum Width	250mm (Single Panel)	Bush for Stile/Louvre	12mm for Tilt Bar (Steel)
Minimum Height	260mm	Staples for Tilt Bar/Louvre	8mm for Louvre (Steel)
Maximum Height	3.0m		
<b>Finish</b>		<b>Stile &amp; Rails</b>	
<b>Type</b>	<b>Ref to Section</b>	<b>Type</b>	<b>Size</b>
Oiled	Finishes	Stile	60mm x 30mm
Lacquered	" "		
Painted	" "		
		<b>Options</b>	<b>Ref to Section</b>
		Colonial	Stiles
		Rabbet	" "
		Astragal	" "
<b>Recess</b>			
<b>Size</b>	<b>Ref to Section</b>		
92mm - 122mm	Specification, Light Gaps for Sliding Panels		
<b>Please Note:</b> Varies, depends on Louvre size. Size, 122mm based on 90mm			
<b>Track Systems</b>			
<b>Type</b>	<b>Multi-fold 25</b>	<b>Single Run 60</b>	
Maximum Width	620mm per Panel (maximum 8 x Panels on each side)	950mm per Panel (maximum 6 x Panels on each track)	
Maximum Height	3000mm	3000mm	
Maximum Weight	25kg per Panel	60kg per Panel	

# Shutters - Cedar Plantation Construction

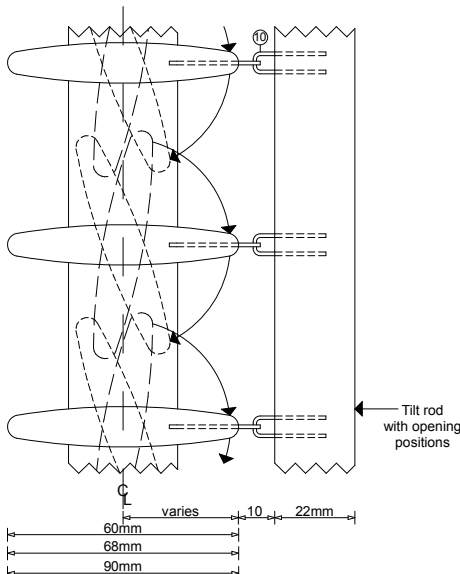
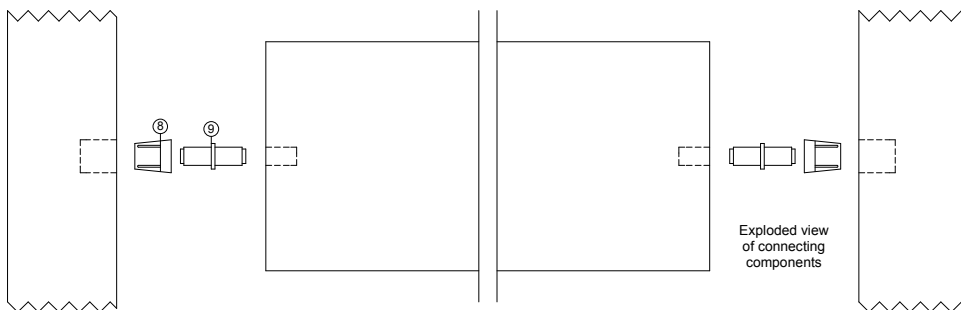


## Cedar Plantation Construction



### Component List

1. Stile
2. Top Rail
3. Mid Rail
4. Louvre
5. Bottom Rail
6. Dowel Joint
7. Tilt Bar
8. Pivot Bush
9. Pivot Pin
10. Staples



### Construction

The Cedar shutter is constructed using hardwood dowelled joints and water based glue that are glued in place to join the stiles, middle rail and bottom rail together as one frame. The dowel size is Ø10mm. All rails have 2 dowels which strengthens, braces and prevents the frame from twisting, bowing or sagging. The louvres are mounted to the stile using the louvre pivot pin and stile bush components. The tilt bar is then mounted to the louvres with staples. A mid-rail must be used when the shutter is over 1500mm in height. This is designed to give greater strength to the shutter frame. Mid rails also allow the shutter louvres to have two sections at different angles for privacy, light and airflow. If the shutter is over 2950mm in height, two mid rails will be necessary.

SPECIFICATIONS